

CASE STUDY

WILBERFORCE TRUST ASSISTED
HOUSING, YORK

FIRECHIEF[®]
making the world a safer place



FIRECHIEF KITCHEN STOVE GUARD

SMART FIRE PREVENTION
SYSTEM INSTALLED IN
ASSISTED HOUSING
DEVELOPMENT

WHAT WAS THE NEED?

The Wilberforce Trust is a charity dedicated to helping and empowering those with sight and hearing loss and impairment in the York and North Yorkshire area to live fulfilling and independent lives. The Trust had tenants in community based supported housing and family homes around York but wanted to deliver an innovative 'extra care' housing scheme designed especially for people with a visual impairment and other disabilities; the first of its kind in the area.

Wilberforce House offers 30 one-bed, open-plan purpose-built, self-contained apartments along with a Living & Learning Zone – providing education and leisure activities – a courtyard cafe and offices for the Trust itself, all set in four acres of accessible landscaped gardens, including a large sensory garden. The apartments utilise smart home and assistive technology personalised to their lifestyle needs.

A consultant was employed to review the development's plans with regard to fire safety. His report included recommendations for additional fire safety measures including the ability for cooker hobs to be switched off by an alarm, as kitchen fires are a significant risk with 50% of all accidental house fires starting in the kitchen.

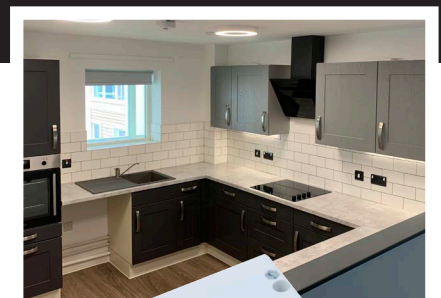
WHY THE FIRECHIEF KITCHEN STOVE GUARD?

The initial solution proposed was costly as it meant hob alarms would need to be hard wired into each apartment's fuse board. Damian Pocknell, Head of Housing, Facilities & IT at the Wilberforce Trust recalled having seen and read about the Firechief Kitchen Stove Guard and realised that this would be much more cost effective. The fire consultant agreed and subsequently signed off on the Kitchen Stove Guard as the approved solution.

The Firechief Kitchen Stove Guard provides a worry-free approach to managing cooker top safety without affecting cooking. The Stove Guard does this by alerting the user of pre-fire conditions and if no action is taken, it automatically turns off the electricity supply to the cooker. The intelligent heat sensor in the Kitchen Stove Guard tracks the rate of increasing temperature, as a steeply rising temperature is an indication of a developing fire hazard.

HOW IT WORKS

The Firechief Kitchen Stove Guard is a device that works out when the temperature of cooking is too high (and therefore potentially hazardous) and turns off the source of



ignition, effectively preventing kitchen fires before they start. This creates a safer home for the tenants and owners of flats and luxury apartments.

The Firechief Kitchen Stove Guard is a smart way to guard against kitchen fires because it responds before the formation of toxic gases and before a fire is ignited. It will even cut off the electricity supply if the hob has been left on accidentally – the setting for this can be tailored to individual installations. The cooker is reactivated simply by resetting the system once the cause of the alert has been investigated and controlled. The device is designed to work with all electric hobs.

CASE STUDY

WILBERFORCE TRUST ASSISTED
HOUSING, YORK

FIRECHIEF[®]
making the world a safer place

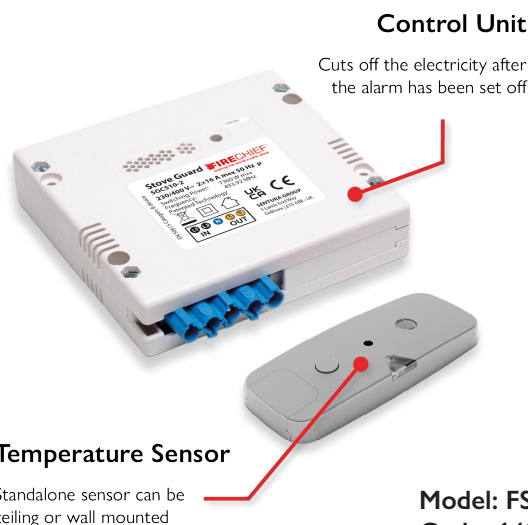
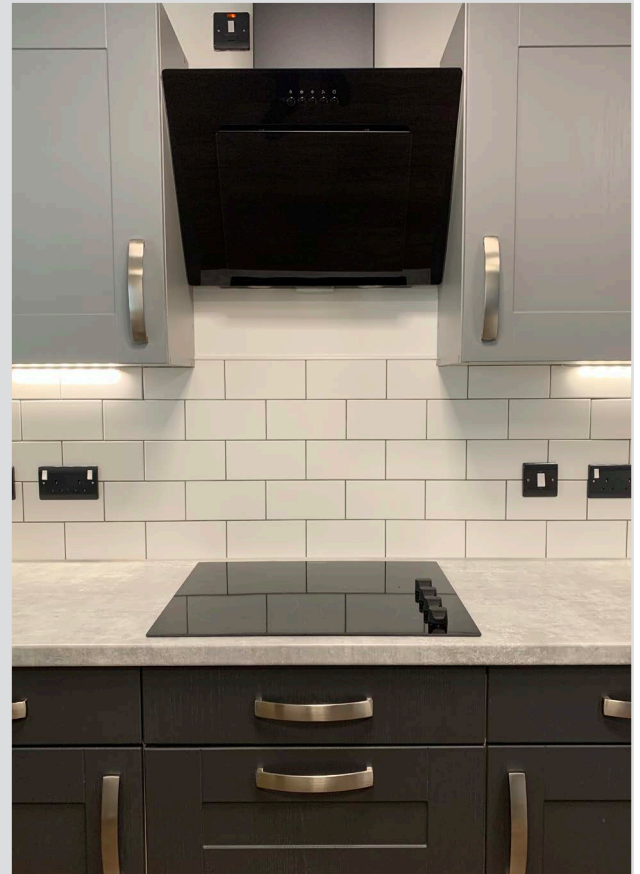
FIRECHIEF KITCHEN STOVE GUARD

SMART FIRE PREVENTION SYSTEM INSTALLED IN ASSISTED HOUSING DEVELOPMENT

THE BENEFITS

The fitting of the Firechief Kitchen Stove Guard solution brought a number of benefits to Wilberforce House:

- Intelligent fire safety technology which prevents fires long before they can start. The heat sensor activates the cooker switch when pre-fire conditions are detected instead of reacting to extinguish a fire once it has actually begun
- Continuous 24/7 protection for peace of mind. The device monitors and adapts to the occupiers cooking style
- Easier and simpler installation - undertaken by the electrical contractors already working on site
- No annual maintenance required
- No monthly testing - automatic fault diagnosis constantly analyses the Kitchen Stove Guard's function when the hob is in use
- Lower cost – less than half the cost of a fire suppression system
- Fulfils the requirements of Stove Guard Standard BS EN 50615
- 2-year warranty



+44 (0) 330 999 0019

sales@firechiefglobal.com

firechiefglobal.com